

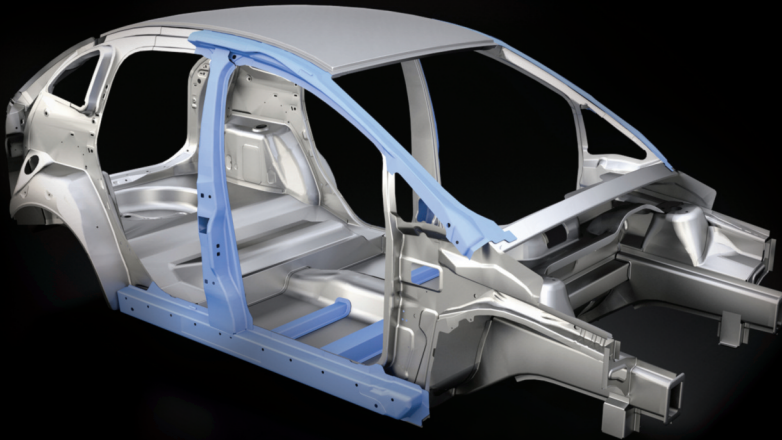
Tata Steel supplements portfolio

TATA STEEL used this year's EuroBLECH as a platform to highlight several extensions to its portfolio of steel products that will further support the ambitions of its customers in key global markets. The steel producer is adding to its hot-rolled range with further portfolio extensions to support growing end-market needs. One

example is its range of low sulphur clean steels which improve processability, offering advantages such as enhanced weldability and higher edge ductility. The company has also developed a tailor-made range of High-Strength Low Alloy (HSLA) steels to support a variety of processing and performance requirements.

Tata Steel has taken the same approach in cold-rolled strip products, expanding its product range by focusing on product advantages such as improved formability and strength. In this product line, Advanced and Ultra High-Strength steels (UHSS) enable lightweighting whilst maintaining existing performance levels. Developments in the company's metallic coated range include products whose coating weight is reduced while maintaining or even improving coating durability.

New products include hot-dip galvanised steel developed to help the automotive industry achieve both crash-protection and lightweighting. Other developments have focused on dynamic car styling and lightweighting. For lifting & excavating customers looking for highly formable material that can bear heavy loads, Tata Steel is offering new developments in hot-rolled, high-strength steels. ■

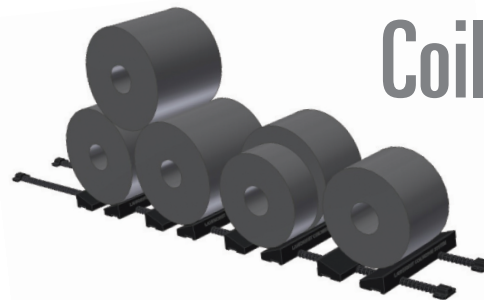


EDGE ROUNDING AND DEBURRING

"Systematic further development of the EdgeRacer has enabled us to present the world's first machine for dry process deburring and edge rounding of steel, stainless steel, aluminium, titanium and many more metals in mixed operation – combining them with the benefits of EdgeRacer (defined edge rounding, exceptional service life and energy efficiency, cutting energy costs by up to 90%)," explained Wöhler at this year's EuroBLECH exhibition in Hanover.

The EdgeRacer comes in single-sided and double-sided versions. The double-sided EdgeRacer is the company's solution for strongly formed components and precision double-sided edge rounding and deburring. The double-sided deburring process offers reproducible results even on 3D components. Brush tool settings, above and below the components, can be individually adjusted.

The EdgeRacer was specially designed for the even edge rounding and deburring of outer and inner contours in sheet metal and plane parts. The parts to be processed are laid on the transport roller table and fed into the machine. In a single run, the upper and bottom surfaces are simultaneously processed, so that the finished parts can be immediately fed onto the next production step. See www.woehler.com. ■



Coil storage system

LANKHORST MOULDINGS introduced its new KLP® CoilWedge System at the EuroBLECH exhibition in Hanover this year.

"This new storage system combines the advantages of both RollStops and Storageblocks. It offers the same flexibility as the RollStop System for coil diameters and full flexibility for all coil widths, similar to the Storageblocks and traditional Coilwedges. The long wedged beams offer safe and flexible storage for wide coils and also for narrower or even (bundled) slit coils," explained the manufacturer.

Coilwedges are placed on the same rails used for the RollStops. This interlocking system consists of a reinforced rail with notches to position the KLP® CoilWedges. Distances between the CoilWedges may vary depending upon coil diameter. One size fits all. Standard CoilWedges come in 1200mm or 1500mm lengths.

"This turnkey storage system offers maximum flexibility and safety. Coils may be stored on up to two levels. The system consists of four simple components: rail, connector, end-caps and CoilWedge, for very simple installation on-site," concluded the company. See www.coilstorage.. ■